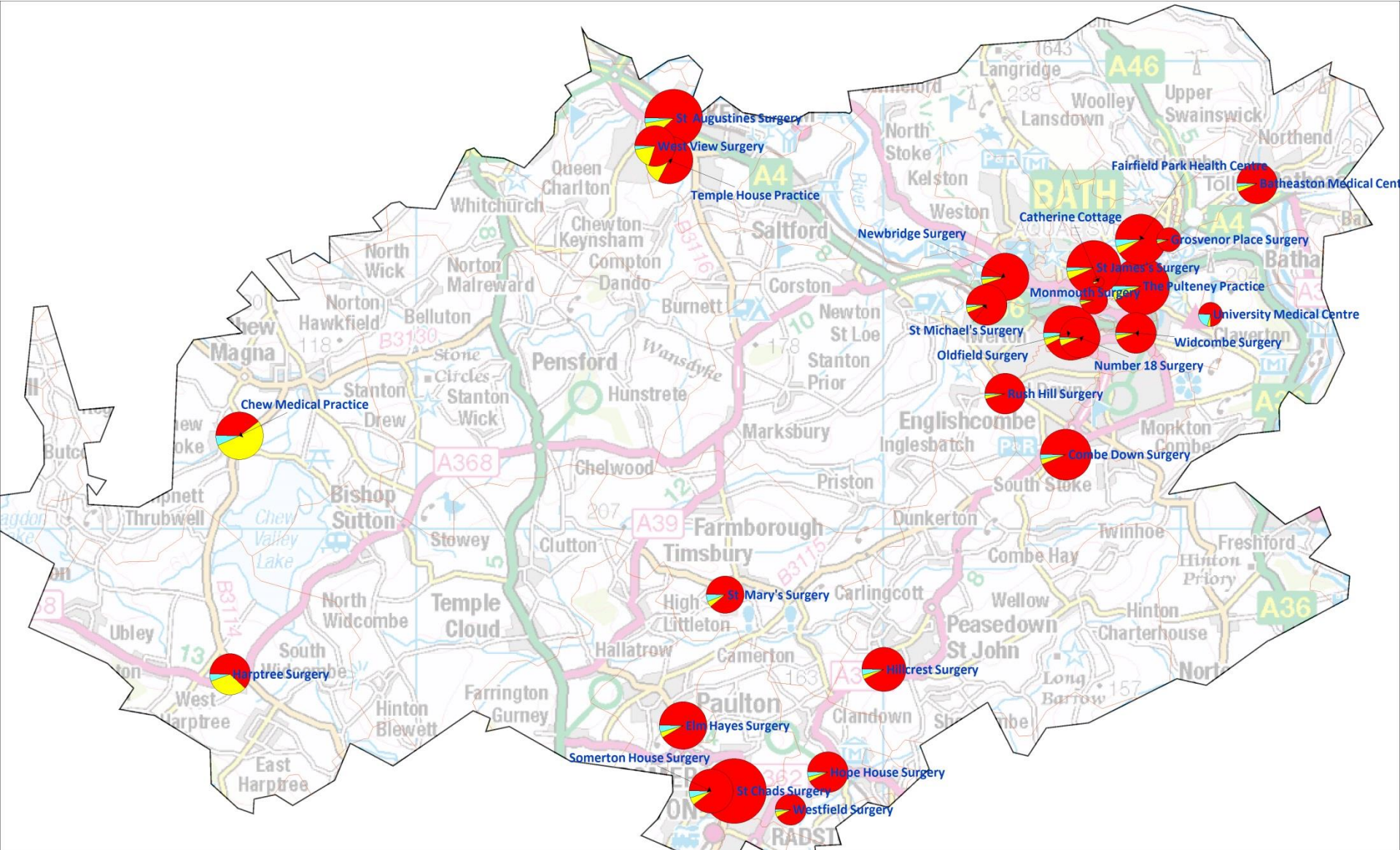


Health & Wellbeing Select Committee – 22nd March 2017

James Scott, Chief Executive



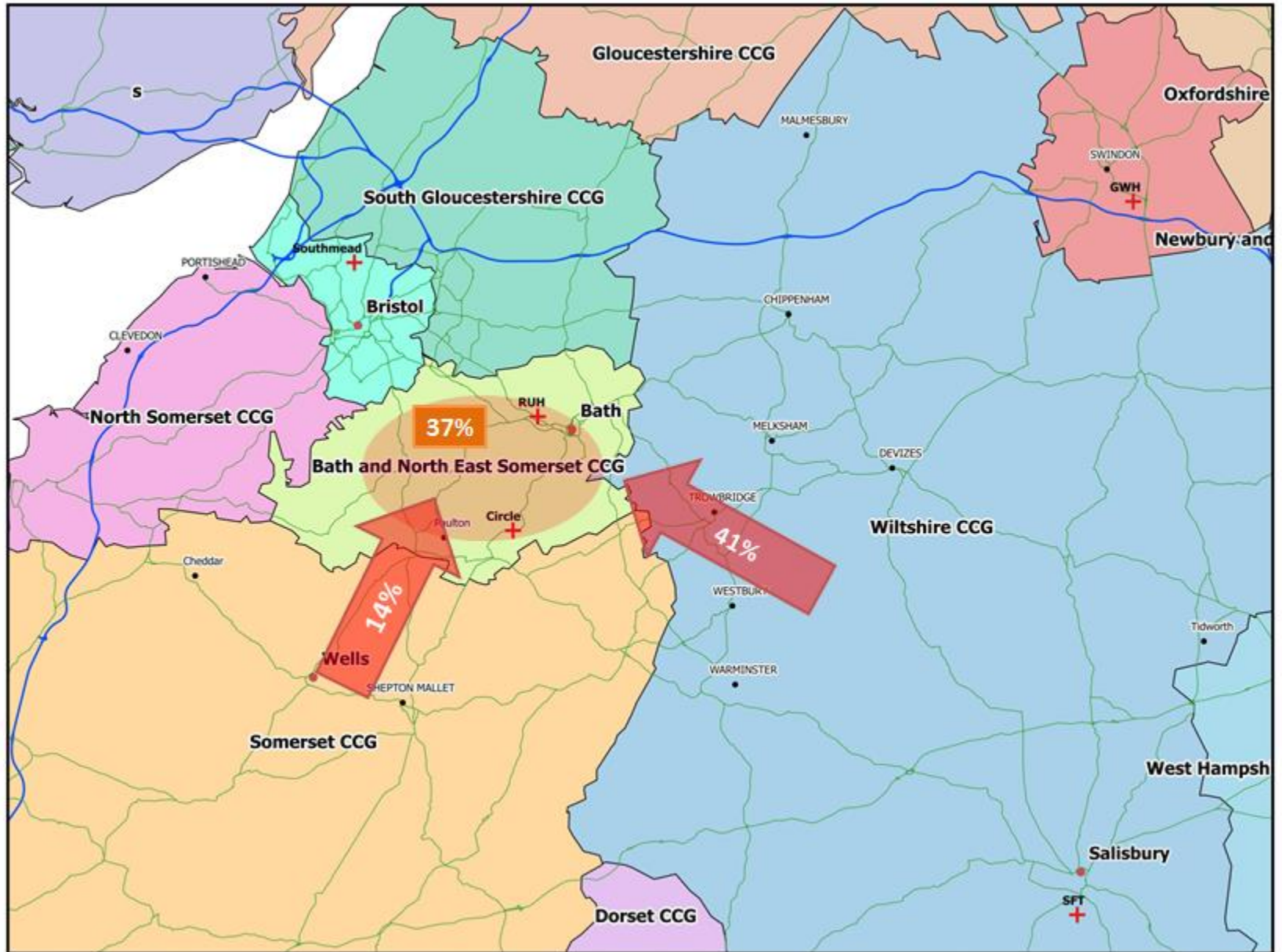
NHS Foundation Trust



PET CT



Links with Bristol



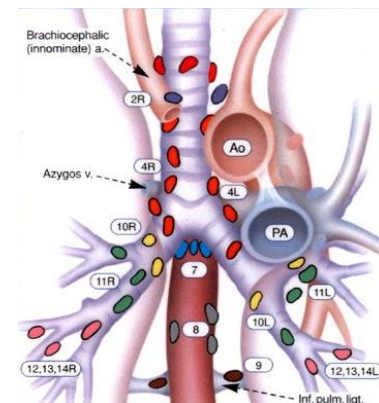
Cardiac MRI

- Most advanced form of heart imaging
- One scan – look for:
 - Heart function
 - Valve disease
 - Heart attacks
 - Reduced flow
 - Inflammation
- Service started 2014 – 381 scans
- Prior to 2014 patients had to go to Bristol or Oxford



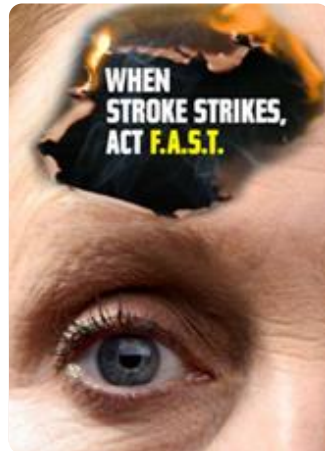
Endo Bronchial Ultra Sound (EBUS)

- Procedure for sampling lymph nodes
- Using bronchoscope with an ultrasound probe
- RUH diagnosed 230 people/year with lung cancer (second highest in cancer network)



Hyper Acute Stroke Unit

- Provide Thrombolysis (clot busting) service 24/7;
- Treat a significant number of patients each year;
- Patients admitted to a Stroke Unit are:
 - More likely to survive the stroke;
 - More likely to make a full recovery from the stroke;
 - More likely to return to own home



Primary Percutaneous Coronary Intervention (PCI)

- Current gold standard treatment for heart attacks;
- Service started in 2010;
- Current provision is:
 - 24/7 networked service with Bristol Heart Institute (BHI);
 - 07:00 to 19:00 Mon-Fri at RUH;
 - Outside of this, at BHI;
- Most important process measure is Door to Balloon time;
- All RUH individual Consultant outcome data submitted nationally & compares well

